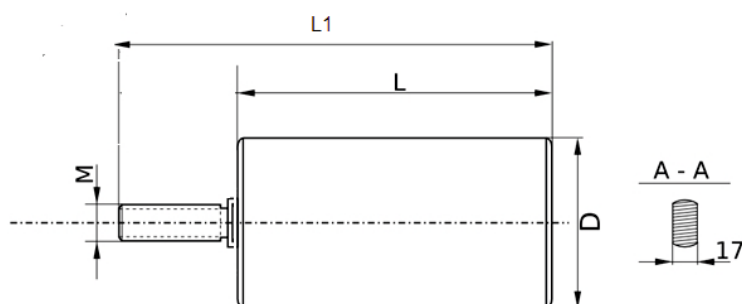


Krężnik kierunkowy



D		L	M	L1	ŁOŻYSKO
STALOWY	PE				
63,5	63	100	M 16, M 20	150	6204 C3
		150		200	
		215		265	
88,9	90	100	M 16, M 20	150	6204 C3
		150		200	
		215		265	
108	110	100	M 16, M 20	150	6204 C3
		150		200	6305 C3
		215		265	6206 C3
133	125	100	M 16, M 20	150	6204 C3
		150		200	6305 C3
		215		265	6206 C3

Oznaczenie krężnika np. K63,5-N/6204-L/L1/M
K63,5-S/6204-L/L1/M

BROLMET

BROLMET

Bronisław Kozera

Stary Zawidów 76 / 59-970 Zawidów

✉ brolmet@wp.pl

www.brolmet.pl